



LET'S GO TO THE JUNGLE!

Learning Objective:

To identify some features
and weather of Indian
tropical seasonal forests.



Jungles are a special type of forest with dense, tangled undergrowth. They are often found in between rainforests and areas of land without forest.

Jungle

Rainforest

Savannah

BACK

NEXT



This is the savannah in Madhya Pradesh, central India. What can you see?



What can you see?



BACK

NEXT



SEASONAL
TROPICAL
FOREST

On the outskirts of the savannah, to the south of Madhya Pradesh and into the regions below it, lies a jungle. It is a special type of jungle, called a **seasonal tropical forest**. Some of the animals of the savannah may go into dense, tangled undergrowth of the jungle, too.



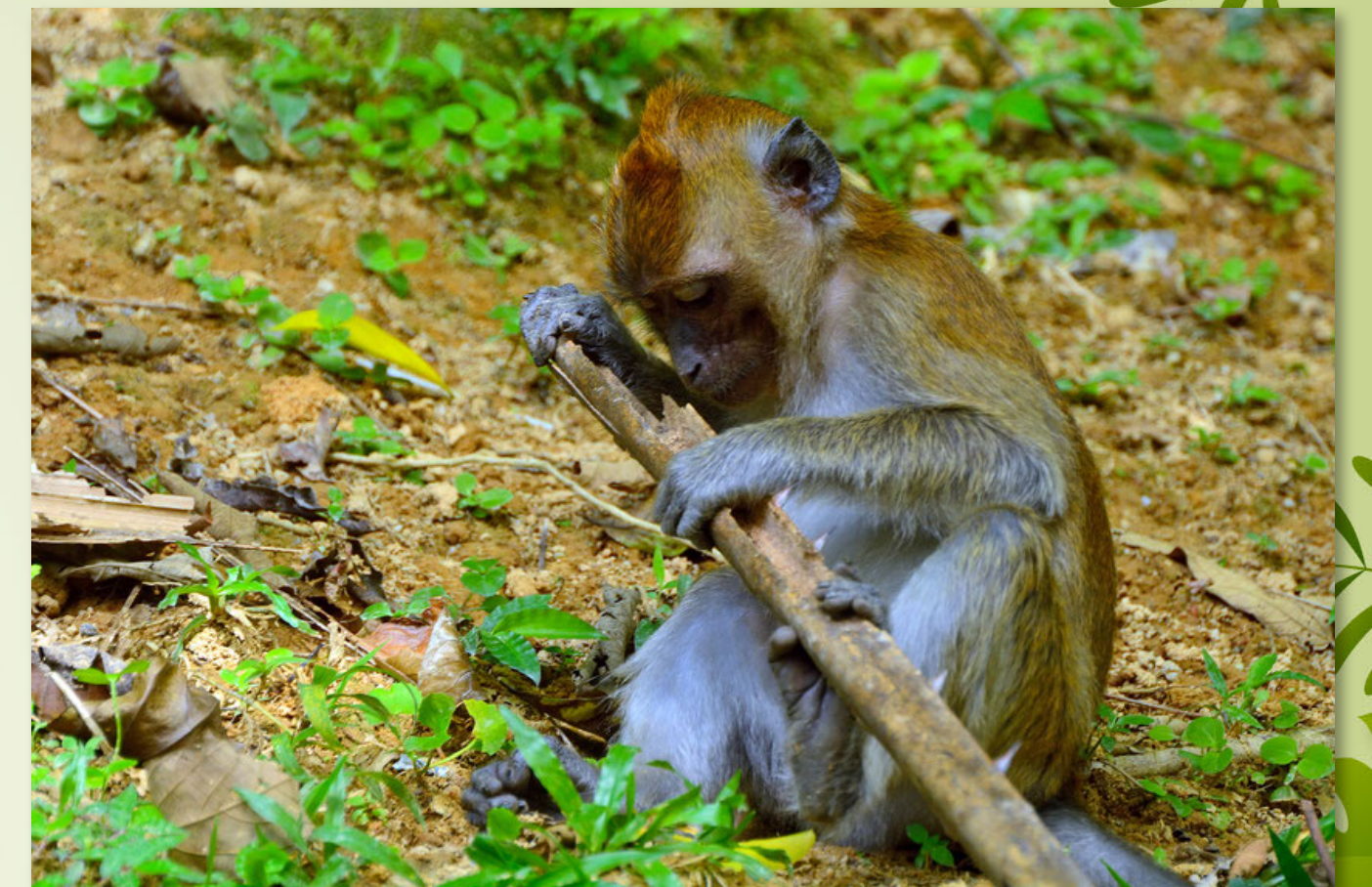
Can you think of reasons why animals might leave the savannah and go into the jungle?



BACK

NEXT

Did you think of these?



Some animals go to hide and escape from predators hunting them for food.

Some animals go to rest in the shade of the trees and bushes.

Some animals go to forage for fruits, nuts, ants and other insects to eat.

What do most
plants need to live and
grow well on the
savannah, in the jungle,
or anywhere?



Most plants need soil to grow in. Their roots grow down into the soil, collecting water and holding the plant upright.

They also need air, water and sunlight to live and grow.





During the dry season, the tall trees shed their leaves.

Lots of sunlight shines through the bare branches onto the plants below. It helps them grow. The undergrowth gets dense and tangled as all of the plants grow through and around each other!

What do you think happens to the trees and other plants during the wet season?



During the wet season, the trees grow their leaves back. The rain water helps the plants below grow even more.

BACK

WWW.PLANBEE.COM

NEXT

What sorts of
animals do you think
might live in the branches
of the tall trees in the
Indian jungle?



Here's just a few of the tree-dwelling animals of the Indian jungle:



Hornbills

Rhesus monkeys

Rock pythons
and tree snakes



Peacocks

Flying squirrels

BACK

NEXT

What sorts of
animals do you think
might live in dense, tangled
undergrowth in the
Indian jungle?

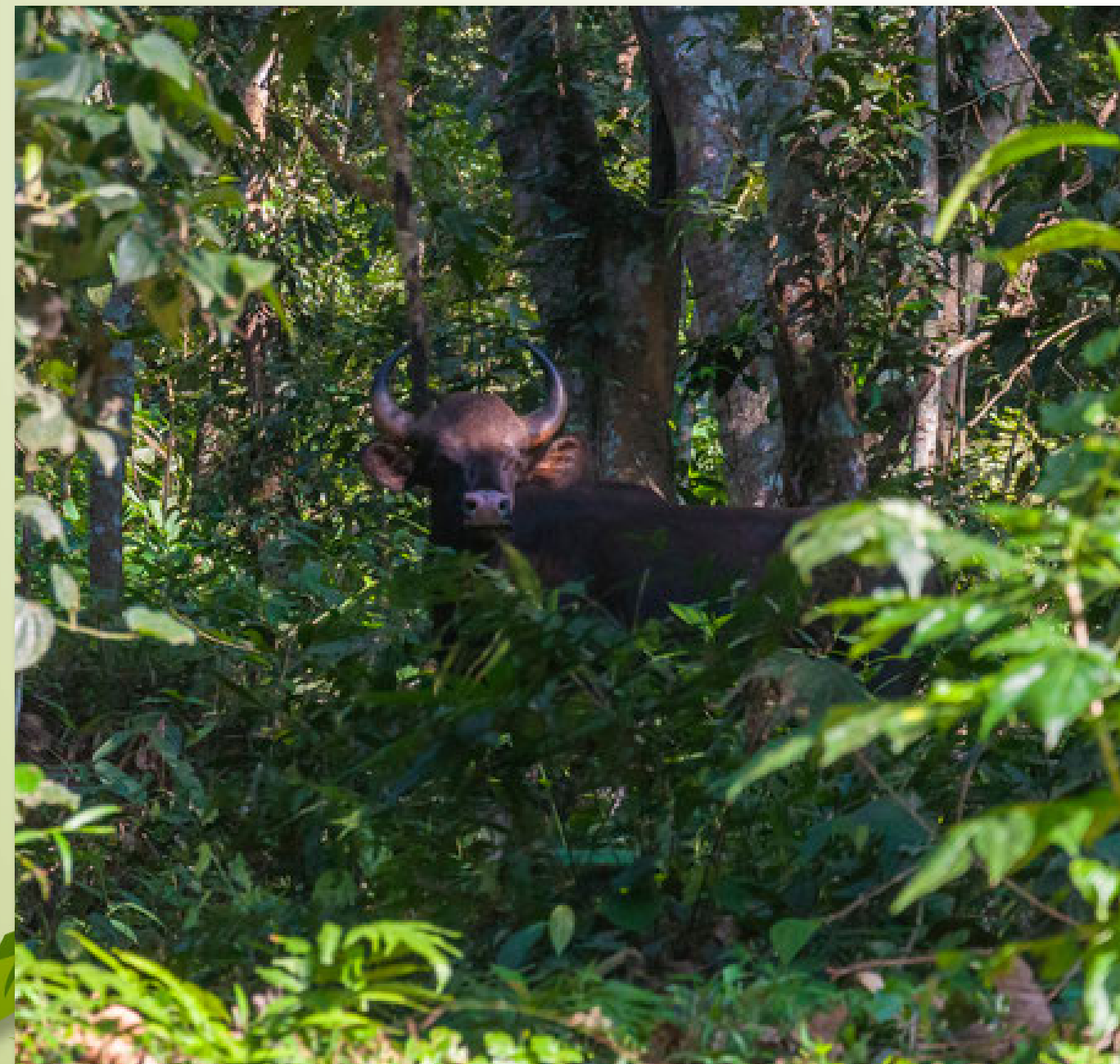


Here's just a few of the ground-dwelling animals of the Indian jungle:



Tigers, leopards and
panthers

Sambar deer



Bison

Sloth bears

Wild boar

BACK

NEXT

True or false?

The Indian seasonal tropical forest has dense, tangled undergrowth.

During the dry season, the trees grow lots of new leaves.

During the dry season the leaves fall off the trees, and the sun shines on the plants below.

During the rainy season, the rain water helps both the trees and the plants below them grow.

It is dry all year round.

Which of these Indian seasonal tropical forest statements are **true/false?**



True or false?

The Indian seasonal tropical forest has dense, tangled undergrowth. ✓

During the dry season, the trees grow lots of new leaves. ✗

During the dry season the leaves fall off the trees, and the sun shines on the plants below. ✓

During the rainy season, the rain water helps both the trees and the plants below them grow. ✓

It is dry all year round. ✗

Did you get them right?

