

# Let's go on Safari!

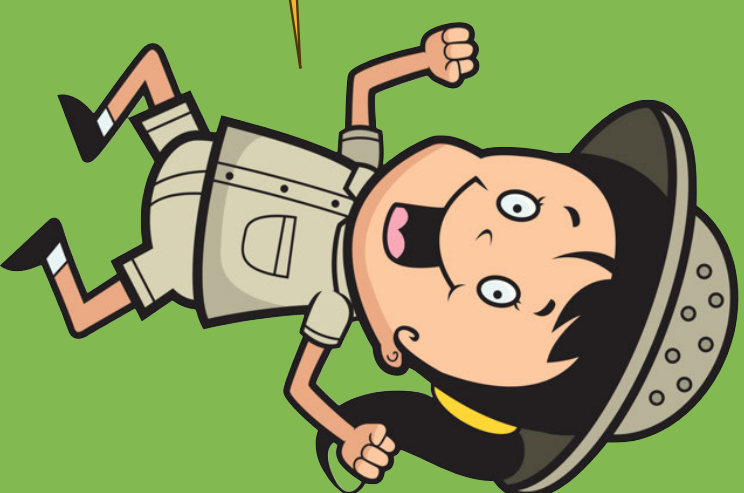
Today we will be...

Finding out about the landscapes of Kenya.



We are on holiday in Kenya!  
We have already been on  
safari and seen some amazing  
animals.

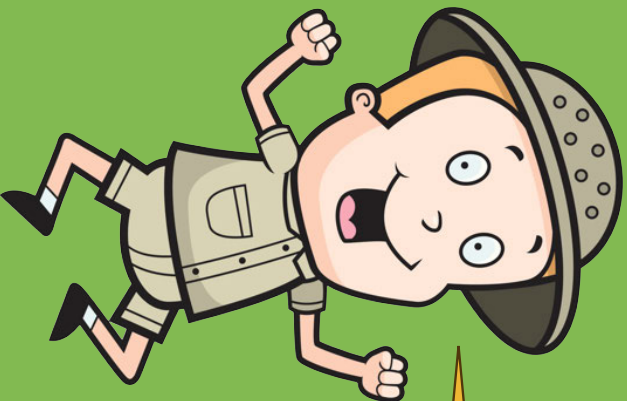
Can you remember some of the animals  
we saw?



Back

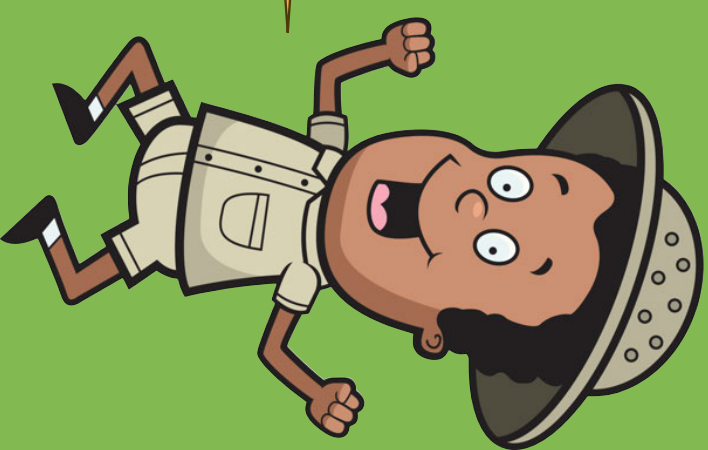
[www.pianibee.com](http://www.pianibee.com)

Next



After our safari, we wanted to explore Kenya some more, so we did some travelling.

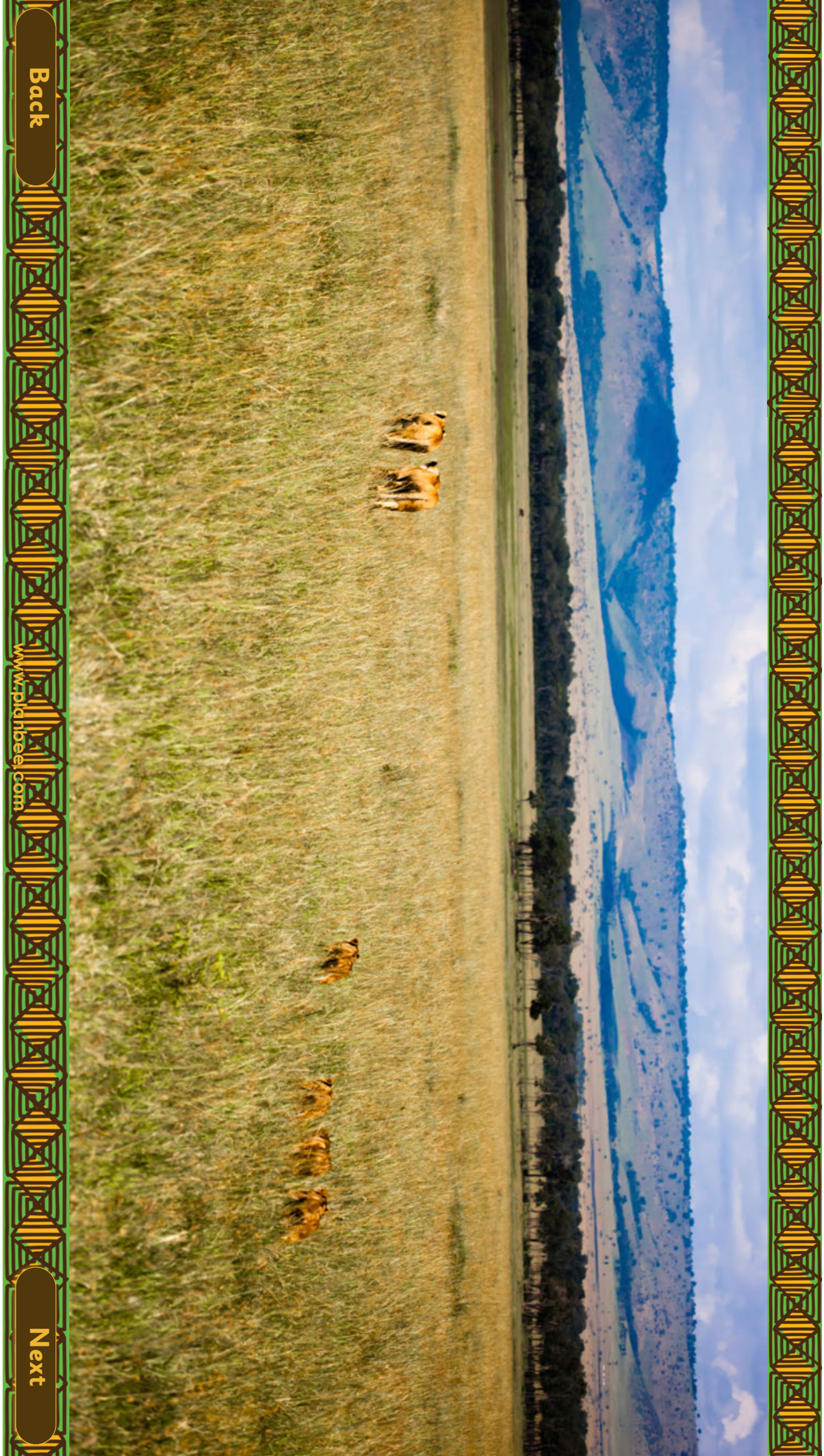
We saw lots of different landscapes and met lots of interesting people. Have a look at some of the photos we took. What can you see?



[Back](#)

[Next](#)



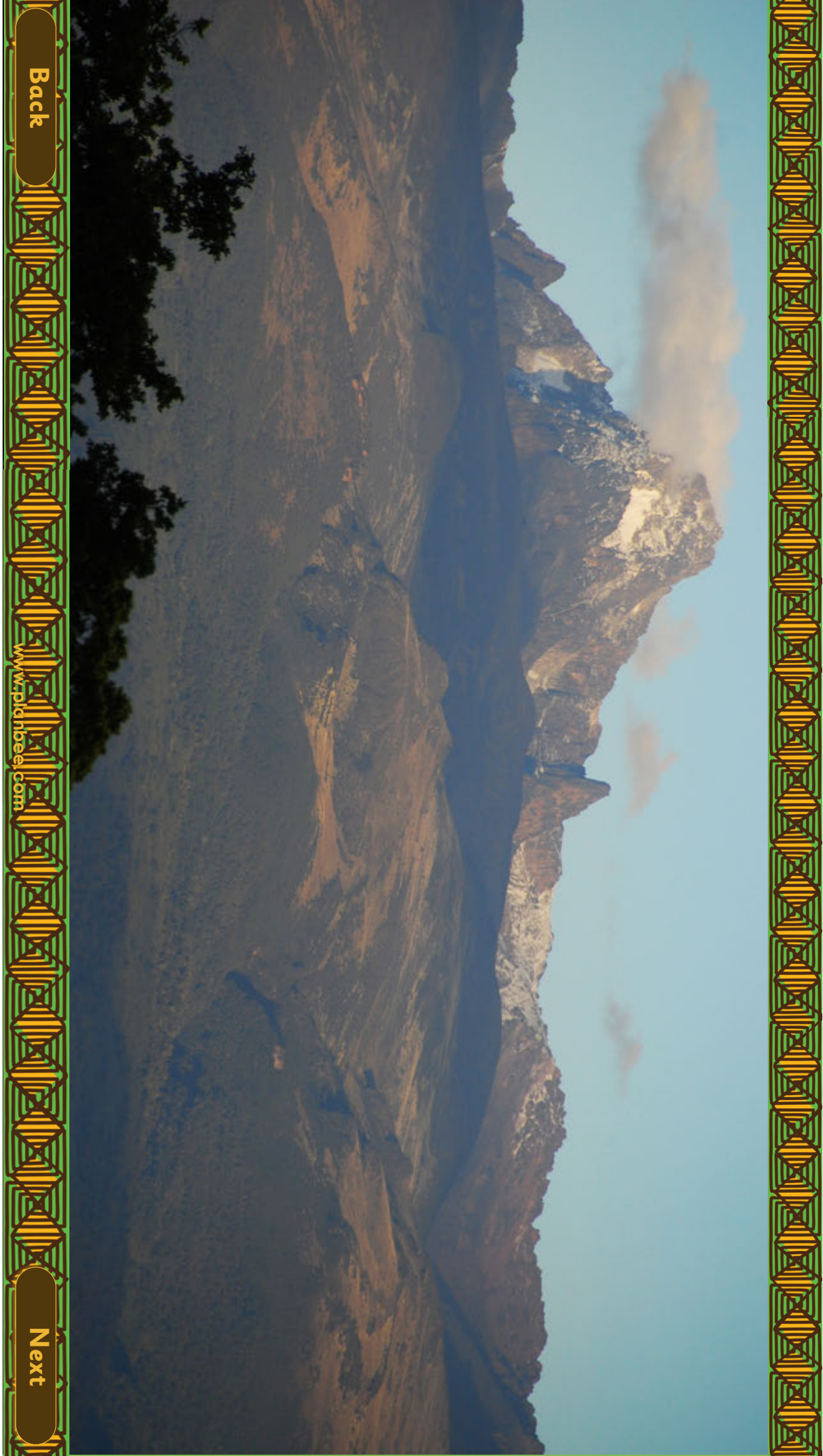


Back

[www.piauhbee.com](http://www.piauhbee.com)

Next





Back

[www.planbee.com](http://www.planbee.com)

Next





Back

[www.pildabee.com](http://www.pildabee.com)

Next



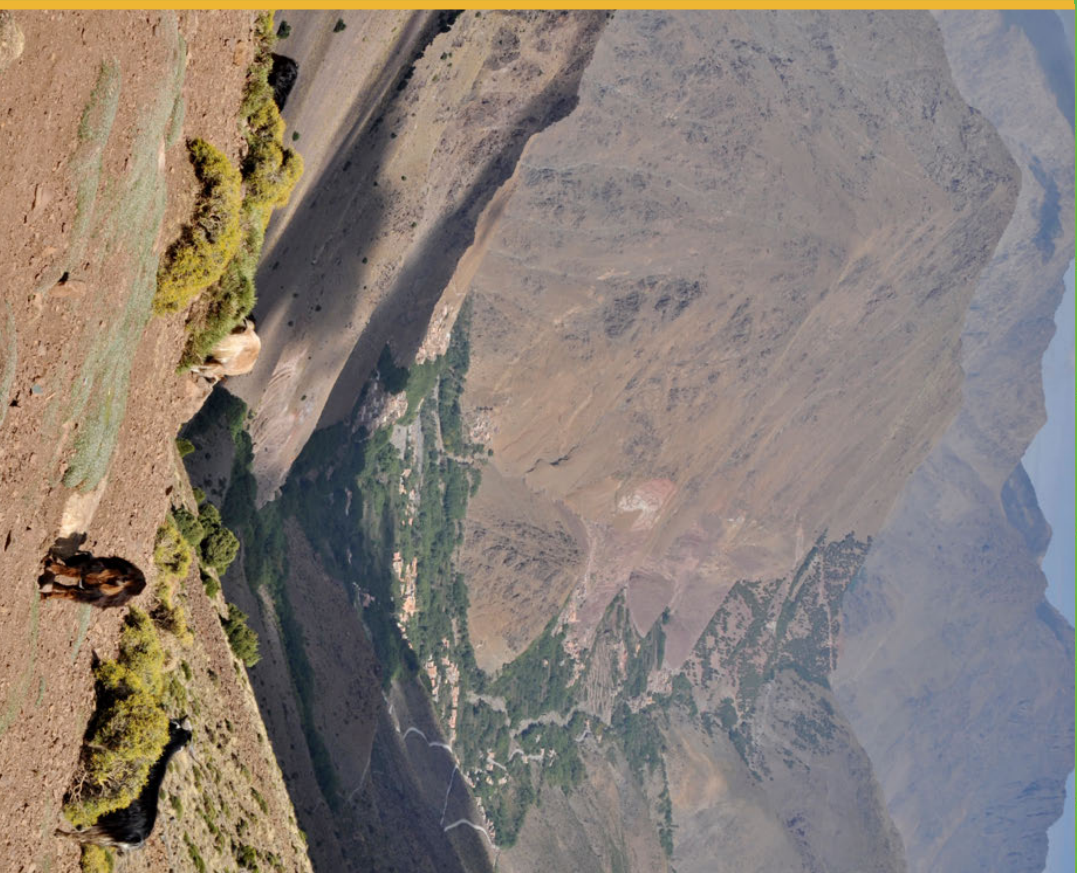


Back

[www.pdinhbee.com](http://www.pdinhbee.com)

Next

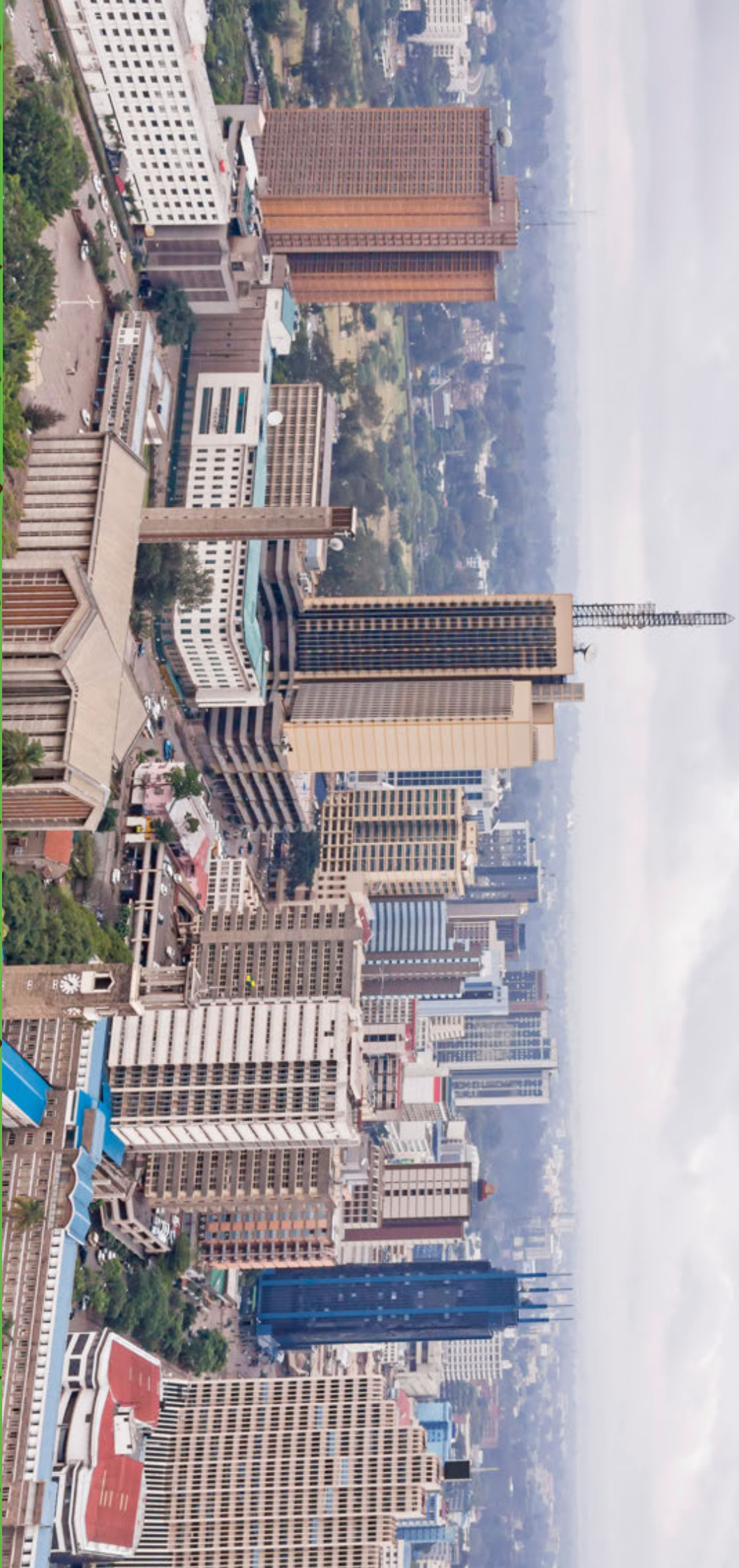




Back

Next



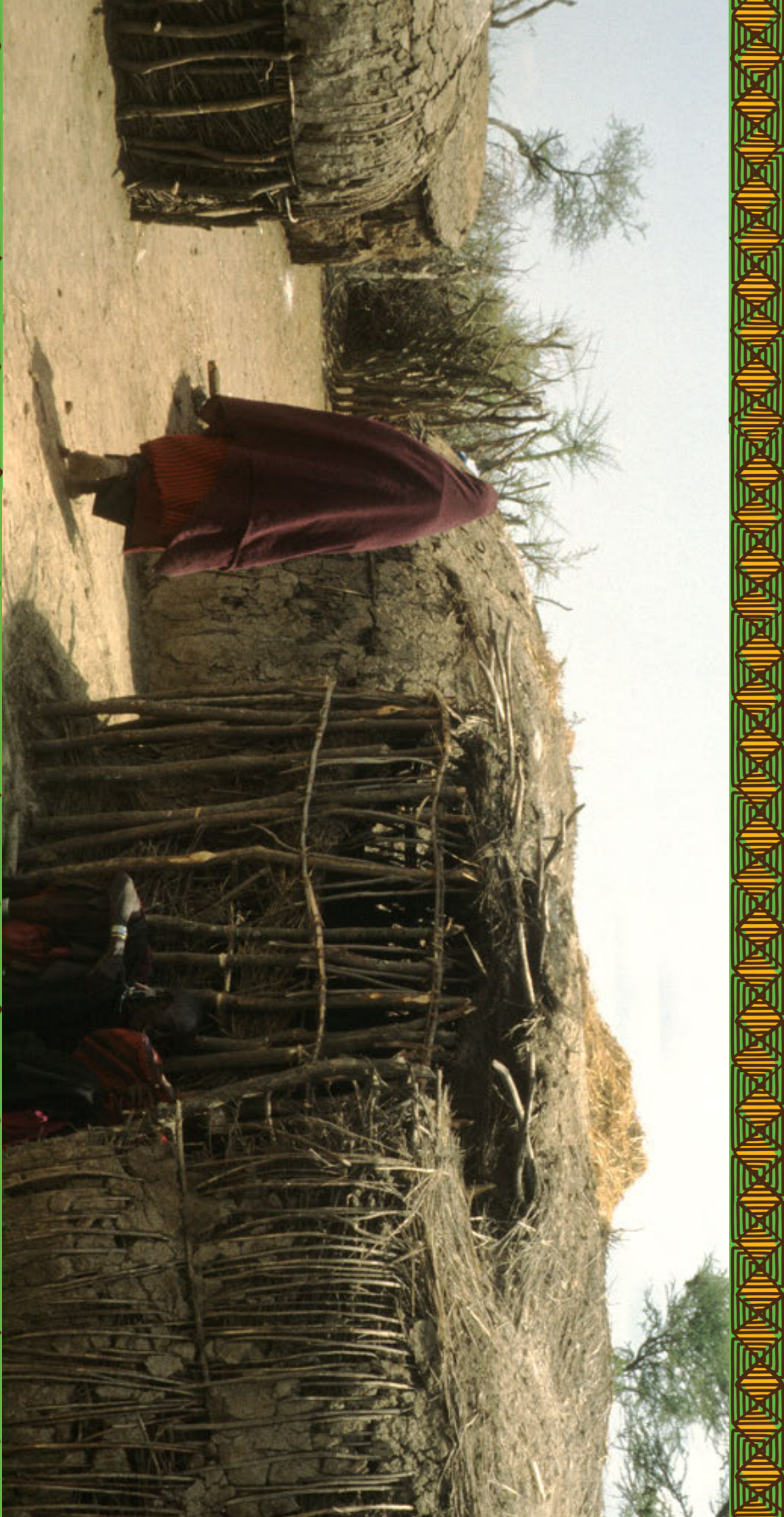


Back

[www.pplnbee.com](http://www.pplnbee.com)

Next





[Back](#)

[www.pdinhbee.com](http://www.pdinhbee.com)

[Next](#)



Kenya is a big country. It is nearly twice the size of the UK. The landscape is very varied, depending on where you are. There are beautiful sandy beaches on the coast that are hot all year round...



[Back](#)

[www.planbee.com](http://www.planbee.com)

[Next](#)

...and there are snow-topped mountains. There are also lots of volcanoes in Kenya. This is Mount Kenya which is the tallest mountain in Kenya and the second tallest in Africa. It is a volcano.



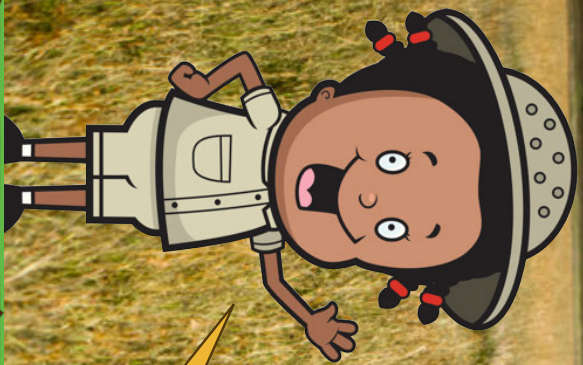
Back

[www.pianbee.com](http://www.pianbee.com)

Next



A lot of Kenya is covered by African savannah. A savannah is tropical grassland, dotted with trees.



Many of the animals we saw on safari live in the savannah.

Back

Next



There are many valleys in Kenya too. A valley is a low area of land between mountains or hills. Valleys often have rivers running through them.



Back

[www.planbee.com](http://www.planbee.com)

Next



Kenya has some large cities with busy roads, tall buildings and lots of people. Nairobi is the capital city of Kenya.



Back

[www.pianbee.com](http://www.pianbee.com)

Next



As well as busy cities, there are also smaller towns and villages in the country. Many people in villages live a traditional way of life that hasn't changed much for hundreds of years.

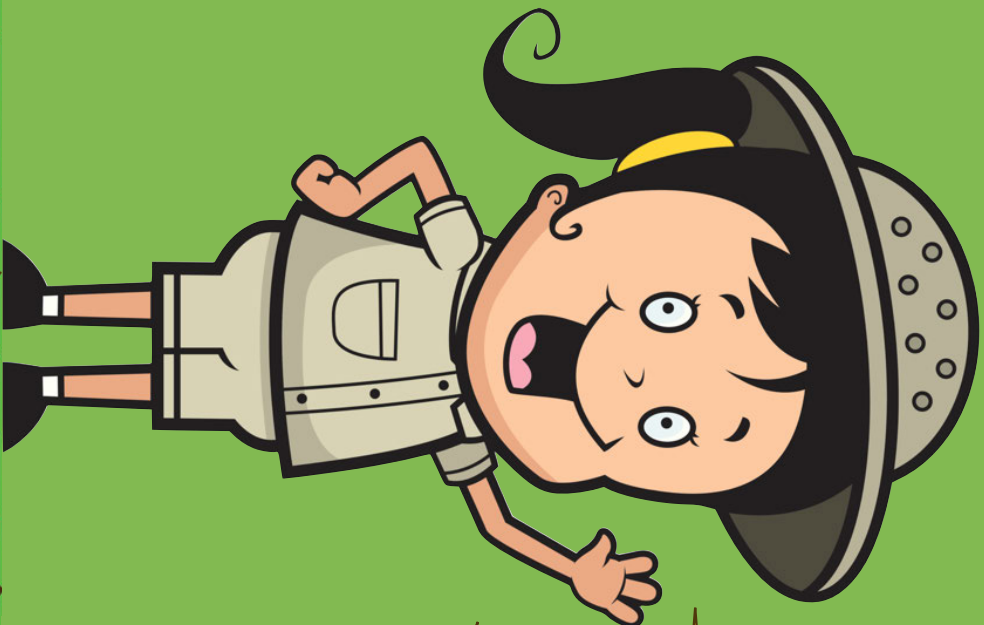


[Back](#)

[www.planbee.com](http://www.planbee.com)

[Next](#)





We loved exploring Kenya!  
What do you like about it from what  
you have seen?

Hot seat!  
What was Kenya like?  
What did you see?